

Caribbean Strategic Planning Workshop

Report-out / Resumen
CFMC
August 11-12, 2022

Rachel Eckley - NOAA Affiliate with SEFSC
Caribbean Fisheries Branch



NOAA
FISHERIES

Scope of Work / Alcance del proyecto

Project objective / Objetivos del proyecto

To produce a strategic plan that

Improves stock assessment and services to CFMC and SSC

- Multi-year project
- Year 1 - SEFSC
- Year 2 - SEFSC, regional partners

Hoshin Kanri strategic planning method

- Prioritize activities that are aligned with strategic goals
- Facilitated workshop: May 16-18, 2022



Team Members / Equipo



Sustainable Fisheries Division

- Caribbean Fisheries Branch
- Data Analysis and Assessment Support Branch
- Gulf of Mexico Fisheries Branch

Population and Ecosystem Monitoring Division

- Oceanic and Coastal Pelagics Branch
- Trawl and Plankton Branch
- Gulf and Caribbean Reef Fish Branch
- Atlantic and Caribbean Reef Fish Branch

Fisheries, Assessment Technology, and Engineering Support Division

- Biology and Life History Branch

Fisheries Statistics Division

- Survey Design, Data Management, and Dissemination Branch
- Catch Validation and Biosampling Branch

Social Science Research Group

Hoshin Process / Proceso Hoshin

Pre-work / Preparación

Review of previous work and effort

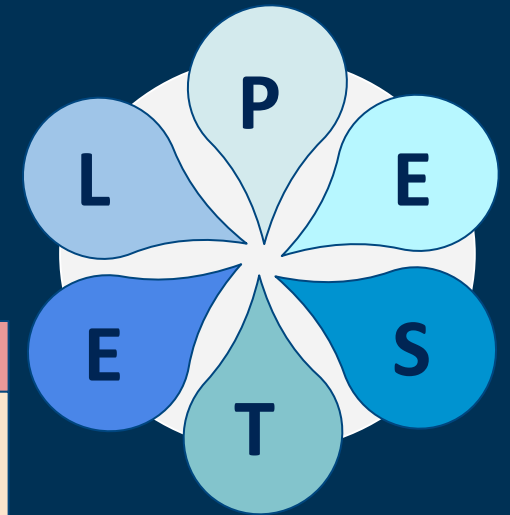
PESTEL Environmental Scan

SWOT Analysis

Vision, Mission, Long-term goals

Idea Generation / Lluvia de Ideas

Deployment / Implementación



	Helpful	Harmful
Internal Origin	Strengths S	Weaknesses W
External Origin	Opportunities O	Threats T

Hoshin Process / Proceso Hoshin

Pre-work / Preparación

Review of previous work and effort

PESTEL Environmental Scan

SWOT Analysis

Vision, Mission, Long-term goals

Idea Generation / Lluvia de Ideas

Deployment / Implementación

Vision

Effective science and management partnerships
and processes in the Caribbean Region

Mission

Conduct and communicate science to support
sustainable and resilient fisheries, ecosystems, fishing
communities, and economies in the US Caribbean

Long-Term Objectives

1. Conduct effective science
2. Strategically communicate science



Hoshin Process / Proceso Hoshin

Pre-work / Preparación

Idea Generation / Lluvia de Ideas

Brainstorm

Affinity Grouping

Tree Diagram 

Arrow Diagram

Drivers, Means, Outcomes

Deployment / Implementación

Long-Term Objectives

Conduct Effective Science

Strategically

Communicate Science

First Level Goal

Data Management and Automation

Second Level Goal

Implement agile project management procedures

Local Projects

Train staff in desired project management tool



NOAA
FISHERIES

First and Second Level Goals

Objetivos Primario y Secundario

24

Data Collection

Collect/compile life history data of priority species (+ 3 others)

Data Analysis

Operationalize analytical product workflows (+ 2 others)

Data Management / Automation

Create transparent and standardized workflows for analytical data provision (+ 4 others)

EBFM + Socioeconomics

Rapport-building, building trust and relationships with stakeholder groups (+ 2 others)

Internal Culture and Communication

Establish an effective coordination strategy among, branches, divisions, NMFS offices (+ 2 others)

External Communication and Collaboration

Develop an external communications strategy (+ 2 others)

Funding

Secured, long term funding for those projects that must be programmatic (+ 2 others)



NOAA
FISHERIES

Current Short Term Projects Proyectos a Corto Plazo

7

Internal Culture and Communication

- Year 2 strategic planning workshop to include SEFSC and regional partners
- Create a slide deck portfolio of who we are and what projects we work on
- Pass Center-wide strategic initiatives to relevant Center objective owners

Data Collection

- Identify steps to fix commercial landing databases issues
- Identify regional data sources with emphasis on federal funding

Data Management and Automation

- Train staff in desired project management tools

Funding

- Identify internal and external sources of funding including working with partners who can assist in securing funding



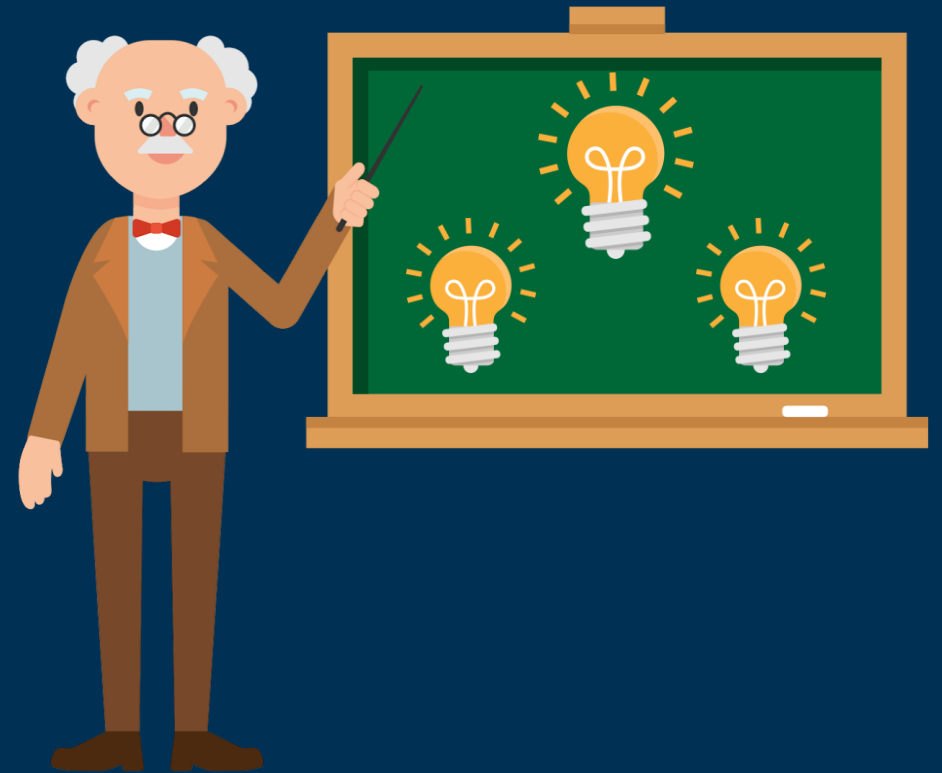
Lessons Learned + Help Needed Experiencias + Ayuda

Lessons Learned / Experiencias

- Diversity of perspectives
- Communication is key
- Importance → number of localized projects

Help Needed / Ayuda

- Continued support from SEFSC leadership
- Dedicated funding
- Dedicated staff in the region
 - e.g., full time staff, few staff co-located seasonally, hoteling



Questions / Preguntas



East End, St. Croix



NOAA
FISHERIES